

**SYMBOL KEY**

- Light**
- ETC Source4 19deg @ 575w
  - ETC Source4 26deg @ 575w
  - ETC Source4 36deg @ 575w
  - ETC S4 19deg 750W @ 750w
  - ETC S4 26deg 750W @ 750w
  - ETC S4 36deg 750W @ 750w
  - ETC Source4 PAR MFL @ 575w
  - ETC Source4 PAR WFL @ 575w
  - Strand 10' Fresnel @ 2kW
  - Strand Iris 1 @ 625/1000/1250w
  - Strand Iris 2 Horiz @ 625/1000/1250w
- Moving Light**
- ETC Revolution @ 750w
- Accessory**
- 6.25in Top Hat
  - 7.5in 4 Leaf Barn Door
  - 2K 4 Leaf Barn Door
  - Wybron CXI Color Fusion 7.5"
- Typical**
- Color
  - Template
  - Focus
  - Unit Number
  - Channel

**NOTES**

1. FINAL TRIMS TO BE DETERMINED DURING FOCUS BY DESIGNER
2. REFER TO LIGHTWRIGHT FOR ALL ACCESSORY INFORMATION
3. HANG ALL UNITS ORIENTED AS DRAWN
4. SINGLE CIRCUIT WHENEVER POSSIBLE
5. ALL S4 5", 10", 14" UNITS TO HAVE DOUBLE CLUTCH YOKES
6. PROVIDE SPARE COLOR: R119, R132 FOR POSSIBLE USE AT FOCUS.

**REVISION HISTORY**

1	Lighting Prelim	11-28-2022
2	Lighting Final	12-19-2022
3	Boom Shift	01-22-2023
4	Gobo Update	01-30-2023

**DISCLAIMER**

THIS LIGHT PLOT REPRESENTS DESIGNER'S VISUAL CONCEPTS ONLY. THE IMPLEMENTATION OF THIS LIGHTING DESIGN MUST COMPLY WITH THE MOST STRINGENT APPLICABLE FEDERAL, LOCAL, STATE AND FIRE CODES. THE DESIGNER IS NOT QUALIFIED TO DETERMINE ELECTRICAL OR STRUCTURAL APPROPRIATENESS OF THIS DESIGN AND WILL NOT ASSUME RESPONSIBILITY FOR DAMAGES RESULTING FROM IMPROPER ENGINEERING, CONSTRUCTION, HANDLING OR USE OF THE ELECTRICAL EQUIPMENT WHICH IMPLEMENTS THIS DESIGN. THE DESIGNER AGREES TO MAKE PROMPT CORRECTING ALTERATIONS TO ANY SPECIFICATIONS FOUND TO BE INCOMPATIBLE WITH PROPER SAFETY PRECAUTIONS.



Director.....Danielle Liccardo-Massood  
 Lighting Designer.....Helena Magee  
 Assist. LD.....Riley Wagner  
 Production Electrician.....Emrys Watson  
 Costume Designer.....Zoe Selesnick

**MOVEMENT**

Rutgers University Movement Class  
 Spring '23  
 Victoria J. Mastrobuono Theater  
 85 George Street  
 New Brunswick, NJ  
 08901

**Helena Magee**  
 Lighting Designer  
 (214) 662-7007  
 helenamagee@gmail.com

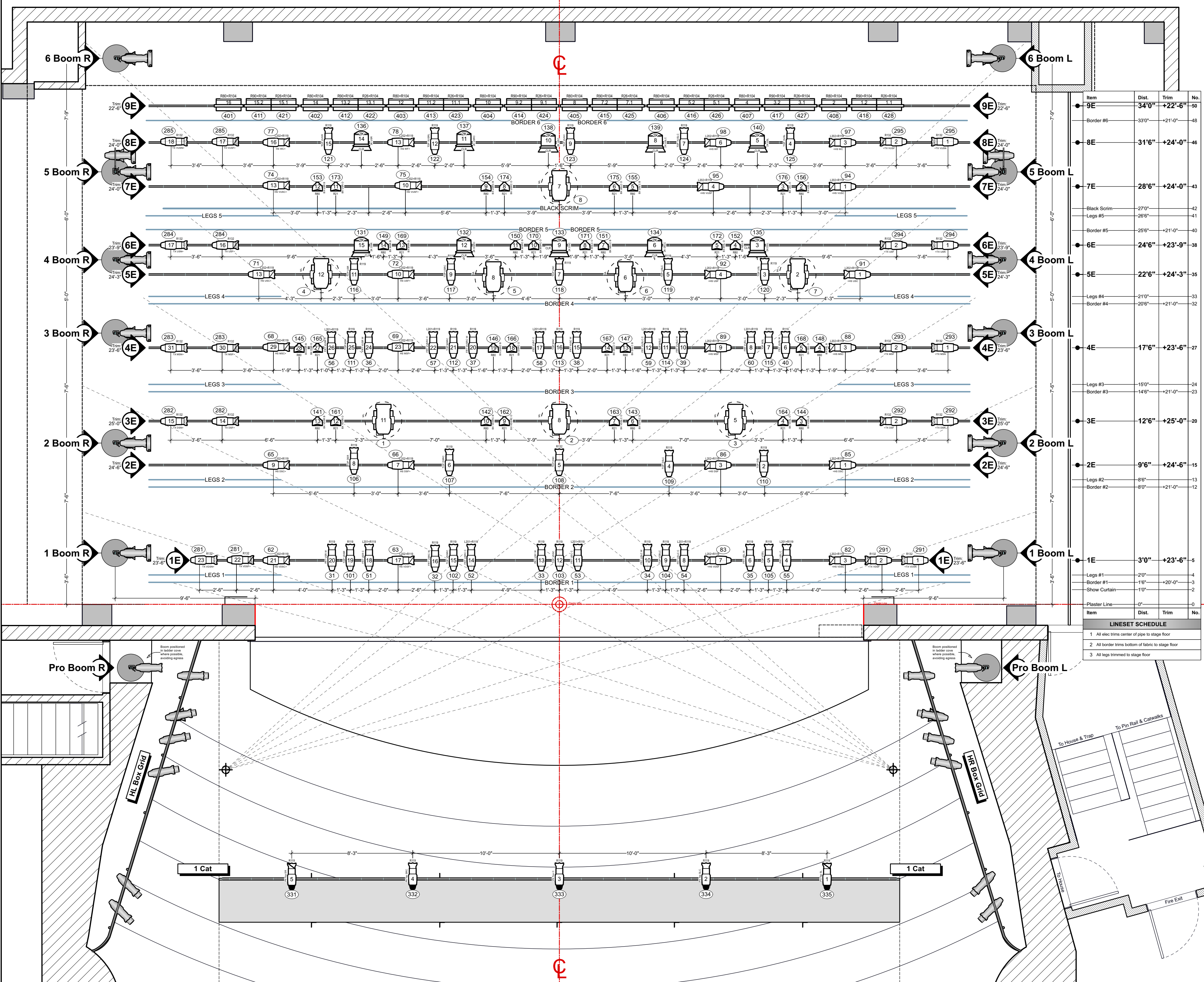
**LIGHT PLOT**

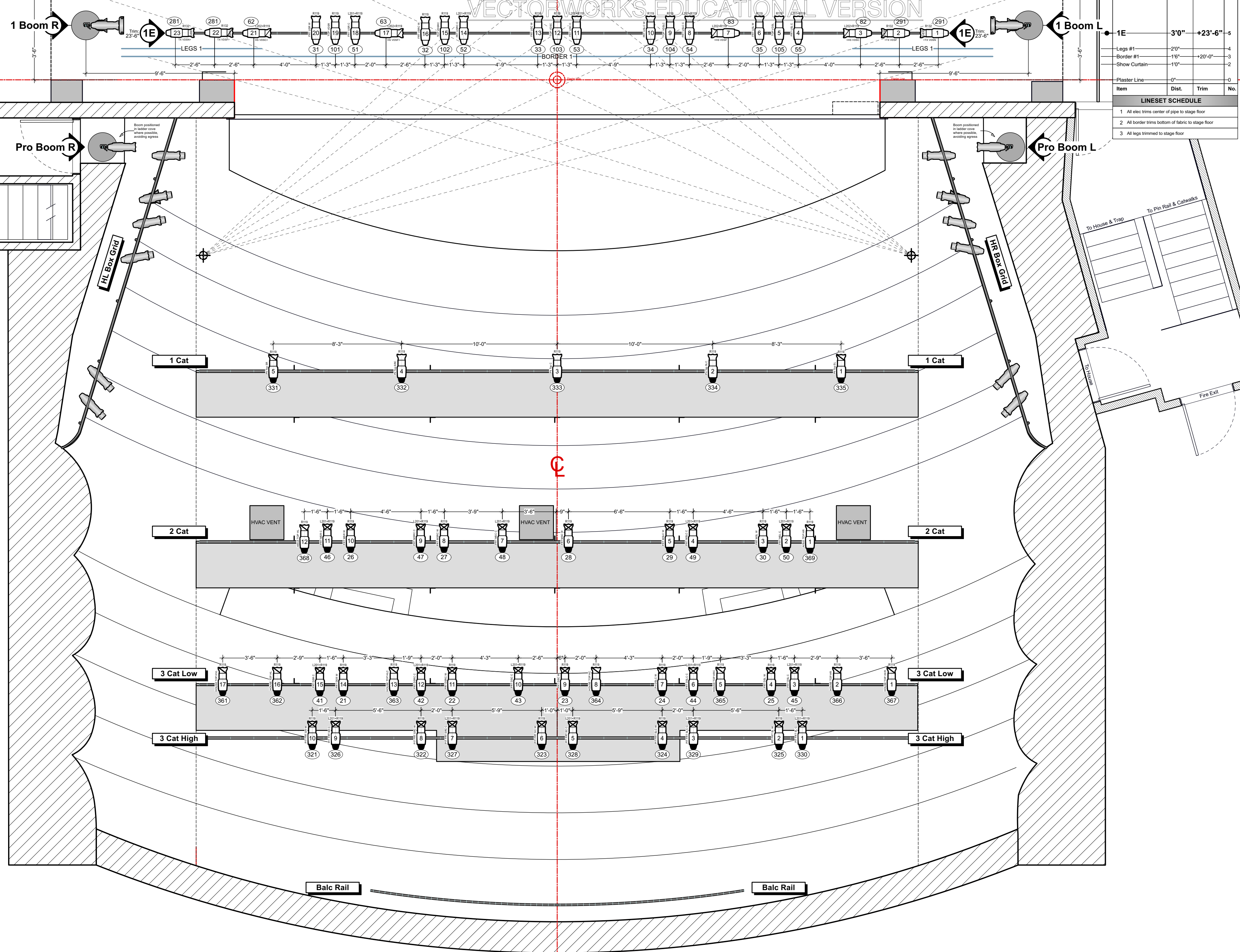
Drawing Number:	1	Drawn By:	HGM
Date:	1/30/23	Print Size:	Arch C
File Name:	Movement Light Plot Final 230130	Scale:	1/4" = 1'-0"

Item	Dist.	Trim	No.
9E	34'0"	+22'-6"	50
Border #6	33'0"	+21'-0"	48
8E	31'6"	+24'-0"	46
7E	28'6"	+24'-0"	43
Black Scrim	27'0"		42
Legs #5	26'6"		41
Border #5	25'6"	+21'-0"	40
6E	24'6"	+23'-9"	38
5E	22'6"	+24'-3"	35
Legs #4	21'0"		33
Border #4	20'6"	+21'-0"	32
4E	17'6"	+23'-6"	27
Legs #3	15'0"		24
Border #3	14'6"	+21'-0"	23
3E	12'6"	+25'-0"	20
Legs #2	8'6"		13
Border #2	8'0"	+21'-0"	12
1E	3'0"	+23'-6"	5
Legs #1	2'0"		4
Border #1	1'6"	+20'-0"	3
Show Curtain	1'0"		2
Plaster Line	0"		0

**LINESSET SCHEDULE**

- 1 All elec trims center of pipe to stage floor
- 2 All border trims bottom of fabric to stage floor
- 3 All legs trimmed to stage floor





Item	Dist.	Trim	No.
Legs #1	2'-0"	4	
Border #1	1'-6"	+20'-0"	-3
Show Curtain	1'-0"		
Plaster Line	0"		

LINESET SCHEDULE	
1	All elec trims center of pipe to stage floor
2	All border trims bottom of fabric to stage floor
3	All legs trimmed to stage floor

### SYMBOL KEY

**Light**

- ETC Source4 19deg @ 575w
- ETC Source4 26deg @ 575w
- ETC Source4 36deg @ 575w
- ETC S4 19deg 750W @ 750w
- ETC S4 26deg 750W @ 750w
- ETC S4 36deg 750W @ 750w
- ETC Source4 PAR MFL @ 575w
- ETC Source4 PAR WFL @ 575w
- Strand 10" Fresnel @ 2kW
- Strand Iris 1 @ 625/1000/1250w
- Strand Iris 2 Horiz @ 625/1000/1250w

**Moving Light**

- ETC Revolution @ 750w

**Accessory**

- 6.25in Top Hat
- 7.5in 4 Leaf Barn Door
- 2K 4 Leaf Barn Door
- Wybron CXI Color Fusion 7.5"

**Typical**

- Color
- Template
- Fixture
- Unit Number
- Channel

- ### NOTES
- FINAL TRIMS TO BE DETERMINED DURING FOCUS BY DESIGNER
  - REFER TO LIGHTWRIGHT FOR ALL ACCESSORY INFORMATION
  - HANG ALL UNITS ORIENTED AS DRAWN
  - SINGLE CIRCUIT WHENEVER POSSIBLE
  - ALL S4 5", 10", 14" UNITS TO HAVE DOUBLE CLUTCH YOKES
  - PROVIDE SPARE COLOR: R119, R132 FOR POSSIBLE USE AT FOCUS.

### REVISION HISTORY

1	Lighting Prelim	11-28-2022
2	Lighting Final	12-19-2022
3	Boom Shift	01-22-2023
4	Gobo Update	01-30-2023

### DISCLAIMER

THIS LIGHT PLOT REPRESENTS DESIGNER'S INTENT & VISUAL CONCEPTS ONLY. THE IMPLEMENTATION OF THIS LIGHTING DESIGN MUST COMPLY WITH THE MOST STRINGENT APPLICABLE FEDERAL, LOCAL, STATE & FIRE CODES. THE DESIGNER IS NOT QUALIFIED TO DETERMINE ELECTRICAL OR STRUCTURAL APPROPRIATENESS OF THIS DESIGN AND WILL NOT ASSUME RESPONSIBILITY FOR DAMAGES RESULTING FROM IMPROPER ENGINEERING, CONSTRUCTION, HANDLING OR USE OF THE ELECTRICAL EQUIPMENT WHICH IMPLEMENTS THIS DESIGN. THE DESIGNER AGREES TO MAKE PROMPT CORRECTING ALTERATIONS TO ANY SPECIFICATIONS FOUND TO BE INCOMPATIBLE WITH PROPER SAFETY PRECAUTIONS.



Director.....Danielle Liccardo-Massood  
 Lighting Designer.....Helena Magee  
 Assist. LD.....Riley Wagner  
 Production Electrician.....Emrys Watson  
 Costume Designer.....Zoe Selesnick

## MOVEMENT

Rutgers University Movement Class  
 Spring '23

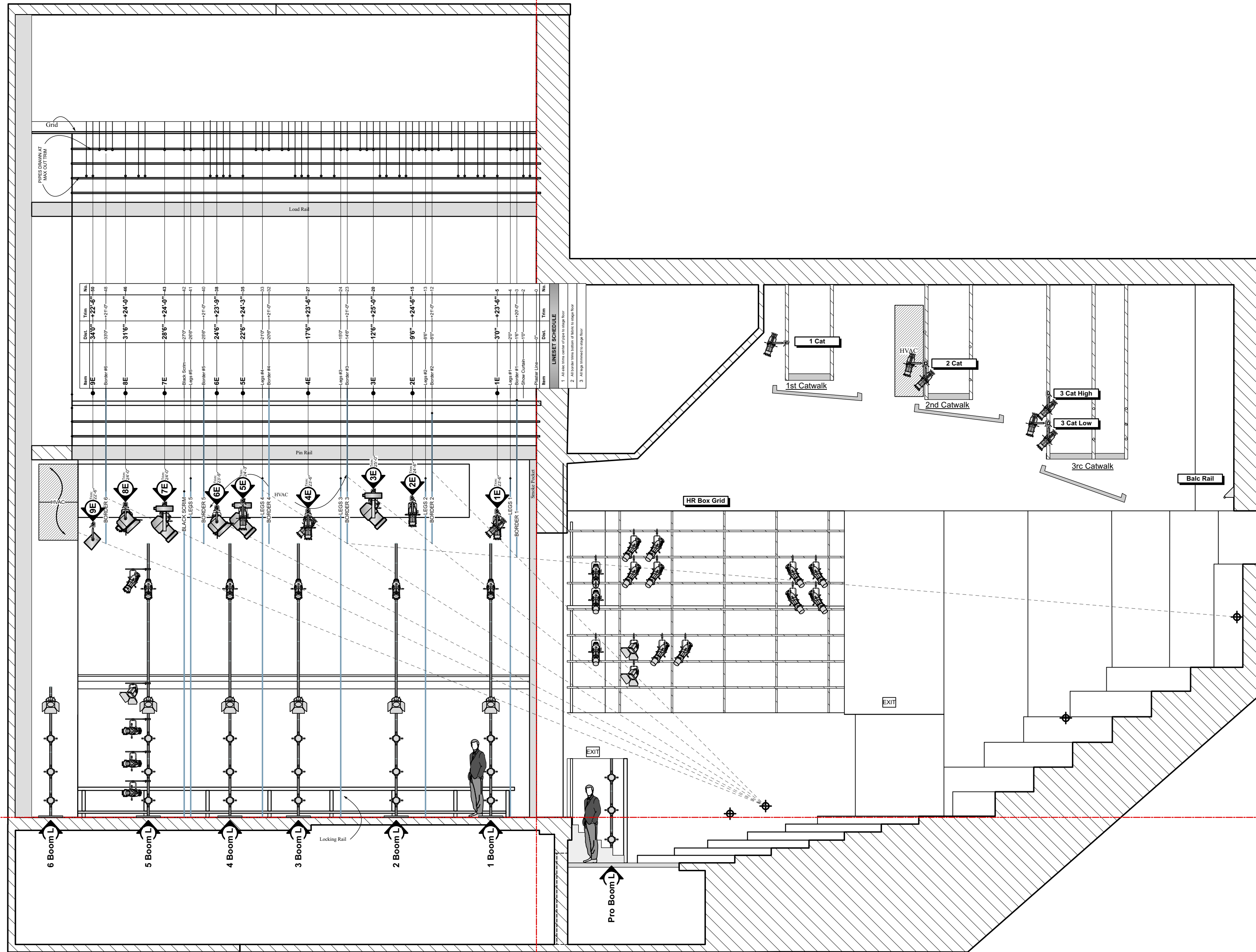
Victoria J. Mastrobuono Theater  
 85 George Street  
 New Brunswick, NJ  
 08901

**Helena Magee**  
 Lighting Designer  
 (214) 662-7007  
 helenamagee@gmail.com

## PLOT FOH

Drawing Number:	Drawn By: HGM
<b>2</b>	Date: 1/30/23
Of 5	Print Size: Arch C
	File Name: Movement Light Plot Final 230130
	Please recycle this paper

Scale: 1/4" = 1'-0"



Item	Qty	Dist.	Trim	Watt	Watt	Watt
1E	1	30'-0"	23'-0"	4	4	4
2E	1	9'-6"	24'-0"	15	15	15
3E	1	12'-6"	25'-0"	20	20	20
4E	1	17'-6"	23'-0"	27	27	27
5E	1	22'-6"	24'-3"	35	35	35
6E	1	24'-6"	23'-9"	38	38	38
7E	1	28'-6"	24'-0"	43	43	43
8E	1	31'-6"	24'-0"	48	48	48
9E	1	34'-0"	22'-0"	50	50	50

Item	Qty	Dist.	Trim	Watt	Watt	Watt
10E	1	30'-0"	23'-0"	4	4	4
11E	1	11'-0"	20'-0"	3	3	3
12E	1	11'-0"	20'-0"	3	3	3
13E	1	11'-0"	20'-0"	3	3	3
14E	1	11'-0"	20'-0"	3	3	3
15E	1	11'-0"	20'-0"	3	3	3
16E	1	11'-0"	20'-0"	3	3	3
17E	1	11'-0"	20'-0"	3	3	3
18E	1	11'-0"	20'-0"	3	3	3
19E	1	11'-0"	20'-0"	3	3	3
20E	1	11'-0"	20'-0"	3	3	3

**LINSET SCHEDULE**

1. All line sets center of pipe to stage floor  
 2. All line sets from bottom of deck to stage floor  
 3. All line sets from top of stage floor

**SYMBOL KEY**

**Light**

- ETC Source4 19deg @ 575w
- ETC Source4 26deg @ 575w
- ETC Source4 36deg @ 575w
- ETC S4 19deg 750W @ 750w
- ETC S4 26deg 750W @ 750w
- ETC S4 36deg 750W @ 750w
- ETC Source4 PAR MFL @ 575w
- ETC Source4 PAR WFL @ 575w
- Strand 10" Fresnel @ 2kW
- Strand Iris 1 @ 625/1000/1250w
- Strand Iris 2 Horiz @ 625/1000/1250w

**Moving Light**

- ETC Revolution @ 750w

**Accessory**

- 6.25in Top Hat
- 7.5in 4 Leaf Barn Door
- 2K 4 Leaf Barn Door
- Wybron CXI Color Fusion 7.5"

**Typical**

- Color
- Template
- Unit Number
- Channel

- NOTES**
- FINAL TRIMS TO BE DETERMINED DURING FOCUS BY DESIGNER
  - REFER TO LIGHTWRIGHT FOR ALL ACCESSORY INFORMATION
  - HANG ALL UNITS ORIENTED AS DRAWN
  - SINGLE CIRCUIT WHENEVER POSSIBLE
  - ALL S4 5", 10", 14" UNITS TO HAVE DOUBLE CLUTCH YOKES
  - PROVIDE SPARE COLOR: R119, R132 FOR POSSIBLE USE AT FOCUS.

**REVISION HISTORY**

1	Lighting Prelim	11-29-2022
2	Lighting Final	12-19-2022
3	Boom Shift	01-22-2023
4	Gobo Update	01-30-2023

**DISCLAIMER**

THIS LIGHT PLAN REPRESENTS DESIGNER'S VISUAL CONCEPTS ONLY. THE IMPLEMENTATION OF THIS LIGHTING DESIGN MUST COMPLY WITH THE MOST STRINGENT APPLICABLE FEDERAL, LOCAL, STATE AND FIRE CODES. THE DESIGNER IS NOT QUALIFIED TO DETERMINE ELECTRICAL OR STRUCTURAL APPROPRIATENESS OF THIS DESIGN AND WILL NOT ASSUME RESPONSIBILITY FOR DAMAGES RESULTING FROM IMPROPER ENGINEERING, CONSTRUCTION, HANDLING OR USE OF THE ELECTRICAL EQUIPMENT WHICH IMPLEMENTS THIS DESIGN. THE DESIGNER AGREES TO MAKE PROMPT CORRECTING ALTERATIONS TO ANY SPECIFICATIONS FOUND TO BE INCOMPATIBLE WITH PROPER SAFETY PRECAUTIONS.



Director.....Danielle Liccardo-Massood  
 Lighting Designer.....Helena Magee  
 Assist. LD.....Riley Wagner  
 Production Electrician.....Emrys Watson  
 Costume Designer.....Zoe Selesnick

**MOVEMENT**

Rutgers University Movement Class  
 Spring '23

Victoria J. Mastrobuono Theater  
 85 George Street  
 New Brunswick, NJ  
 08901

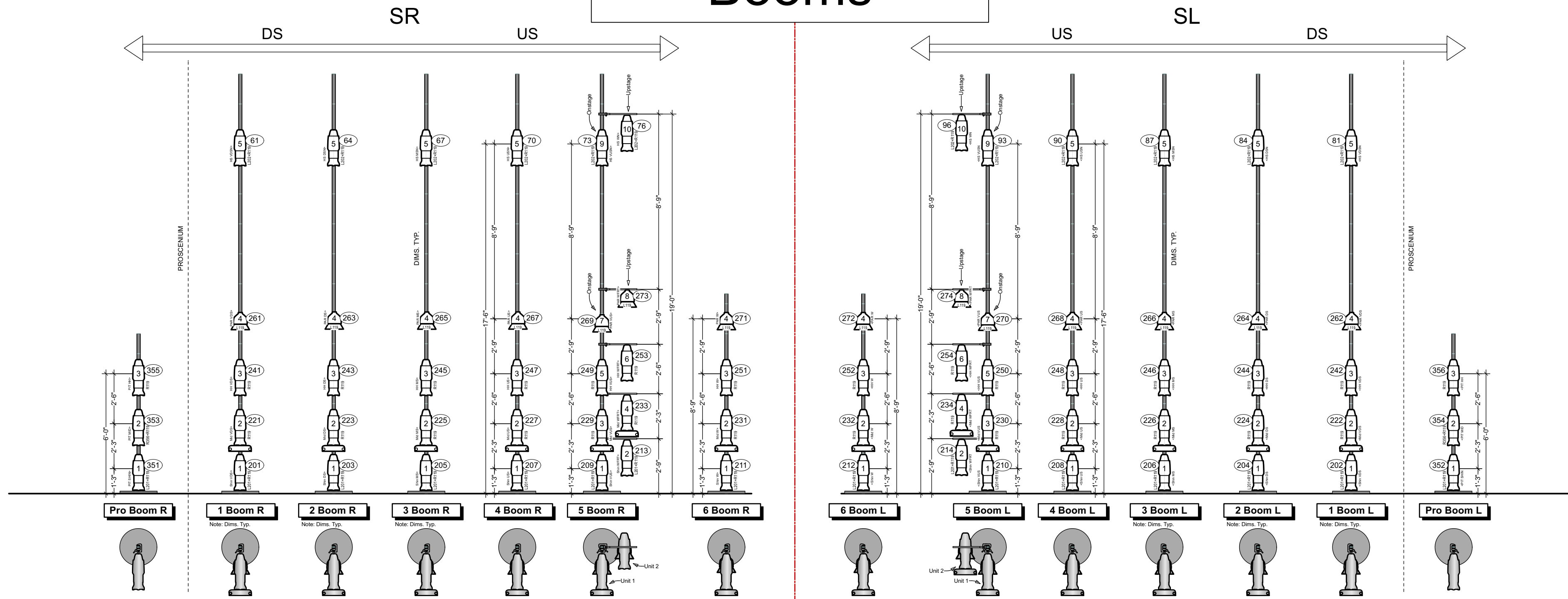
**Helena Magee**  
 Lighting Designer  
 (214) 662-7007  
 helenamagee@gmail.com

**SECTION**

Drawing Number:	Drawn By: HGM
<b>3</b>	Date: 1/30/23
	Print Size: Arch C
	File Name: Movement Light Plot Final 230130
Of 5	

Scale: 3/16" = 1'-0"

# Booms



### SYMBOL KEY

**Light**

- ETC Source4 19deg @ 575w
- ETC Source4 26deg @ 575w
- ETC Source4 36deg @ 575w
- ETC S4 19deg 750W @ 750w
- ETC S4 26deg 750W @ 750w
- ETC Source4 PAR MFL @ 575w
- ETC Source4 PAR WFL @ 575w
- Strand 10" Fresnel @ 2kW
- Strand Iris 1 @ 625/1000/1250w
- Strand Iris 2 Horiz @ 625/1000/1250w

**Moving Light**

- ETC Revolution @ 750w

**Accessory**

- 6.25in Top Hat
- 7.5in 4 Leaf Barn Door
- 2K 4 Leaf Barn Door
- Wybron CXI Color Fusion 7.5"

**Typical**

- Color
- Template
- Fixture
- Unit Number
- Channel

- ### NOTES
- FINAL TRIMS TO BE DETERMINED DURING FOCUS BY DESIGNER
  - REFER TO LIGHTWRIGHT FOR ALL ACCESSORY INFORMATION
  - HANG ALL UNITS ORIENTED AS DRAWN
  - SINGLE CIRCUIT WHENEVER POSSIBLE
  - ALL S4 5", 10", 14" UNITS TO HAVE DOUBLE CLUTCH YOKES
  - PROVIDE SPARE COLOR: R119, R132 FOR POSSIBLE USE AT FOCUS.

### REVISION HISTORY

1	Lighting Prelim	11-28-2022
2	Lighting Final	12-19-2022
3	Boom Shift	01-22-2023
4	Gobo Update	01-30-2023

### DISCLAIMER

THIS LIGHT PLOT REPRESENTS DESIGN INTENT & VISUAL CONCEPTS ONLY. THE IMPLEMENTATION OF THIS LIGHTING DESIGN MUST COMPLY WITH THE MOST STRINGENT APPLICABLE FEDERAL, LOCAL, STATE & FIRE CODES. THE DESIGNER IS NOT QUALIFIED TO DETERMINE ELECTRICAL OR STRUCTURAL APPROPRIATENESS OF THIS DESIGN AND WILL NOT ASSUME RESPONSIBILITY FOR DAMAGES RESULTING FROM IMPROPER ENGINEERING, CONSTRUCTION, HANDLING OR USE OF THE ELECTRICAL EQUIPMENT WHICH IMPLEMENTS THIS DESIGN. THE DESIGNER AGREES TO MAKE PROMPT CORRECTING ALTERATIONS TO ANY SPECIFICATIONS FOUND TO BE INCOMPATIBLE WITH PROPER SAFETY PRECAUTIONS.



Director.....Danielle Liccardo-Massood  
 Lighting Designer.....Helena Magee  
 Assist. LD.....Riley Wagner  
 Production Electrician.....Emrys Watson  
 Costume Designer.....Zoe Selesnick

## MOVEMENT

Rutgers University Movement Class  
 Spring '23

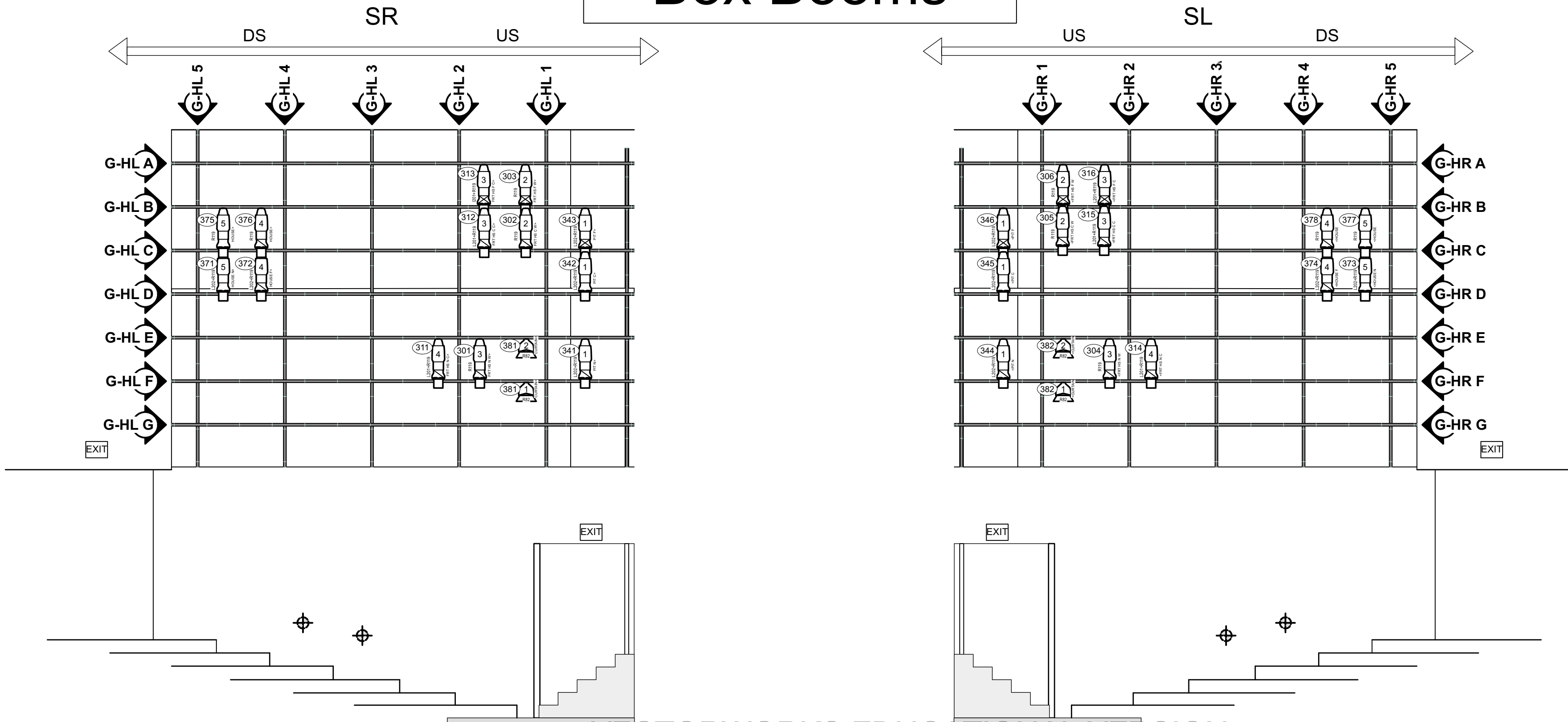
Victoria J. Mastrobuono Theater  
 85 George Street  
 New Brunswick, NJ  
 08901

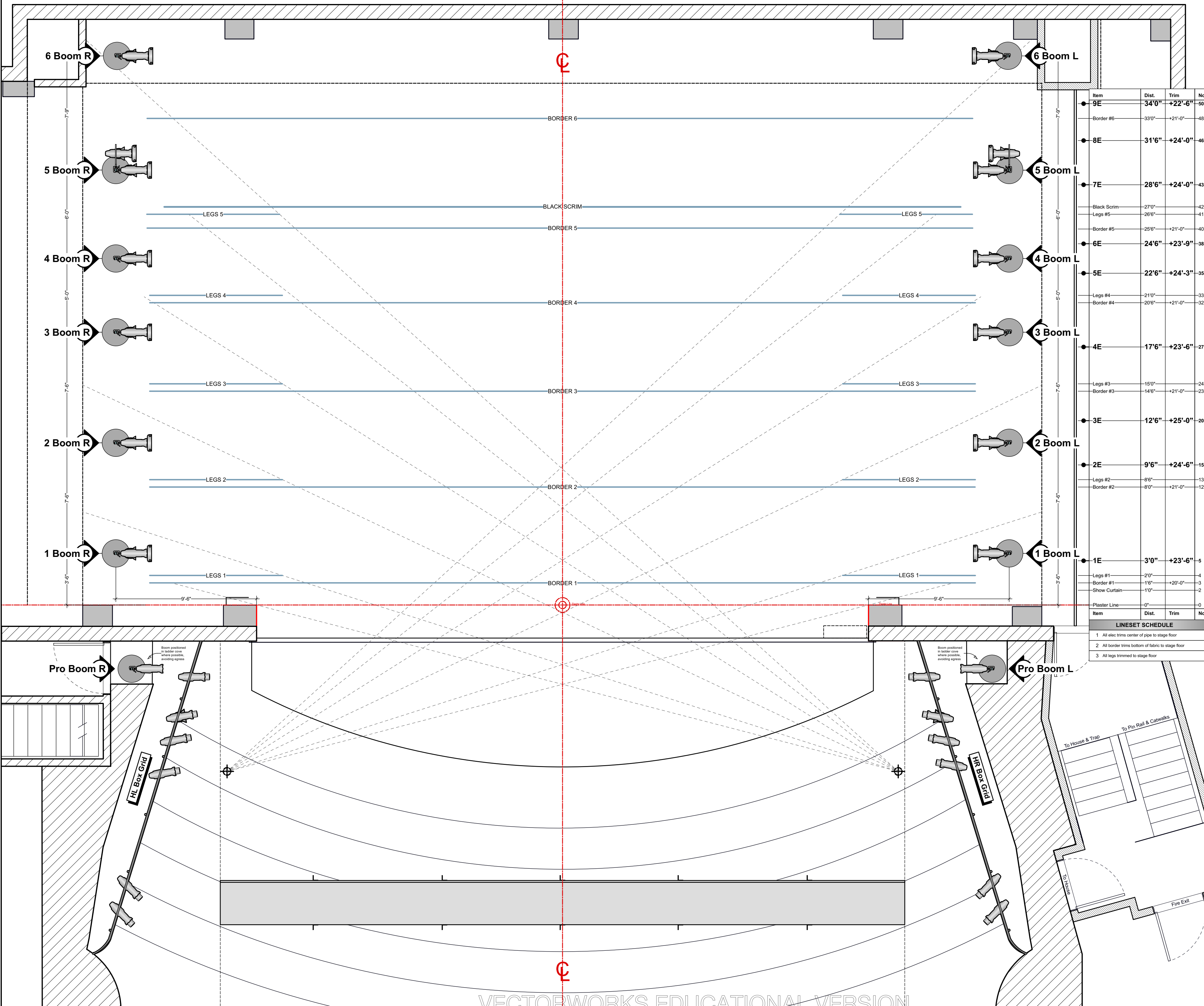
**Helena Magee**  
 Lighting Designer  
 (214) 662-7007  
 helenamagee@gmail.com

# BOOMS

Drawing Number:	4	Drawn By:	HGM
Date:	1/30/23	Print Size:	Arch C
File Name:	Movement Light Plot Final 230130	Scale:	1/4" = 1'-0"

# Box Booms





**SYMBOL KEY**

**Light**

- ETC Source4 19deg @ 575w
- ETC Source4 26deg @ 575w
- ETC Source4 36deg @ 575w
- ETC S4 19deg 750W @ 750w
- ETC S4 26deg 750W @ 750w
- ETC S4 36deg 750W @ 750w
- ETC Source4 PAR MFL @ 575w
- ETC Source4 PAR WFL @ 575w
- Strand 10" Fresnel @ 2kW
- Strand Iris 1 @ 625/1000/1250w
- Strand Iris 2 Horiz @ 625/1000/1250w

**Moving Light**

- ETC Revolution @ 750w

**Accessory**

- 6.25in Top Hat
- 7.5in 4 Leaf Barn Door
- 2K 4 Leaf Barn Door
- Wybron CXI Color Fusion 7.5"

**Typical**

Color  
Template  
Fresnel  
Unit Number  
Channel

Item	Dist.	Trim	No.
9E	34'0"	+22'-6"	50
Border #6	33'0"	+21'-0"	48
8E	31'6"	+24'-0"	46
7E	28'6"	+24'-0"	43
Black Scrim	27'0"		42
Legs #5	26'6"		41
Border #5	25'6"	+21'-0"	40
6E	24'6"	+23'-9"	38
5E	22'6"	+24'-3"	35
Legs #4	21'0"		33
Border #4	20'6"	+21'-0"	32
4E	17'6"	+23'-6"	27
Legs #3	15'0"		24
Border #3	14'6"	+21'-0"	23
3E	12'6"	+25'-0"	20
2E	9'6"	+24'-6"	15
Legs #2	8'6"		13
Border #2	8'0"	+21'-0"	12
1E	3'0"	+23'-6"	5
Legs #1	2'0"		4
Border #1	1'6"	+20'-0"	3
Show Curtain	1'0"		2
Plaster Line	0"		0

Item	Dist.	Trim	No.
<b>LINESET SCHEDULE</b>			
1 All elec trims center of pipe to stage floor			
2 All border trims bottom of fabric to stage floor			
3 All legs trimmed to stage floor			

- NOTES**
- FINAL TRIMS TO BE DETERMINED DURING FOCUS BY DESIGNER
  - REFER TO LIGHTWRIGHT FOR ALL ACCESSORY INFORMATION
  - HANG ALL UNITS ORIENTED AS DRAWN
  - SINGLE CIRCUIT WHENEVER POSSIBLE
  - ALL S4 5", 10", 14" UNITS TO HAVE DOUBLE CLUTCH YOKES
  - PROVIDE SPARE COLOR: R119, R132 FOR POSSIBLE USE AT FOCUS.

**REVISION HISTORY**

1	Lighting Prelim	11-28-2022
2	Lighting Final	12-19-2022
3	Boom Shift	01-22-2023
4	Gobo Update	01-30-2023

**DISCLAIMER**

THIS LIGHT PLOT REPRESENTS DESIGNER'S INTENT & VISUAL CONCEPTS ONLY. THE IMPLEMENTATION OF THIS LIGHTING DESIGN MUST COMPLY WITH THE MOST STRINGENT APPLICABLE FEDERAL, LOCAL, STATE & FIRE CODES. THE DESIGNER IS NOT QUALIFIED TO DETERMINE ELECTRICAL OR STRUCTURAL APPROPRIATENESS OF THIS DESIGN AND WILL NOT ASSUME RESPONSIBILITY FOR DAMAGES RESULTING FROM IMPROPER ENGINEERING, CONSTRUCTION, HANDLING OR USE OF THE ELECTRICAL EQUIPMENT WHICH IMPLEMENTS THIS DESIGN. THE DESIGNER AGREES TO MAKE PROMPT CORRECTING ALTERATIONS TO ANY SPECIFICATIONS FOUND TO BE INCOMPATIBLE WITH PROPER SAFETY PRECAUTIONS.

**RUTGERS**  
Mason Gross School of the Arts

Director.....Danielle Liccardo-Massood  
Lighting Designer.....Helena Magee  
Assist. LD.....Riley Wagner  
Production Electrician.....Emrys Watson  
Costume Designer.....Zoe Selesnick

**MOVEMENT**

Rutgers University Movement Class  
Spring '23

Victoria J. Mastrobuono Theater  
85 George Street  
New Brunswick, NJ  
08901

**Helena Magee**  
Lighting Designer  
(214) 662-7007  
helenamagee@gmail.com

**DECK**

Drawing Number:	5	Drawn By:	HGM
Date:	1/30/23	Print Size:	Arch C
File Name:	5	File Name:	Movement Light Plot Final 230130
Scale:	1/4" = 1'-0"		